



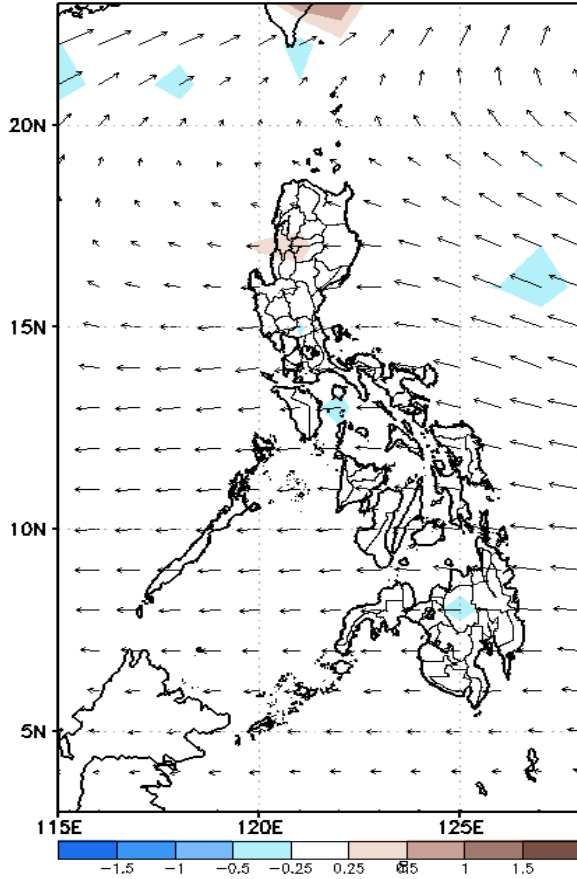
Week 1 & Week 2 Forecast for the Philippines using GEFS Model



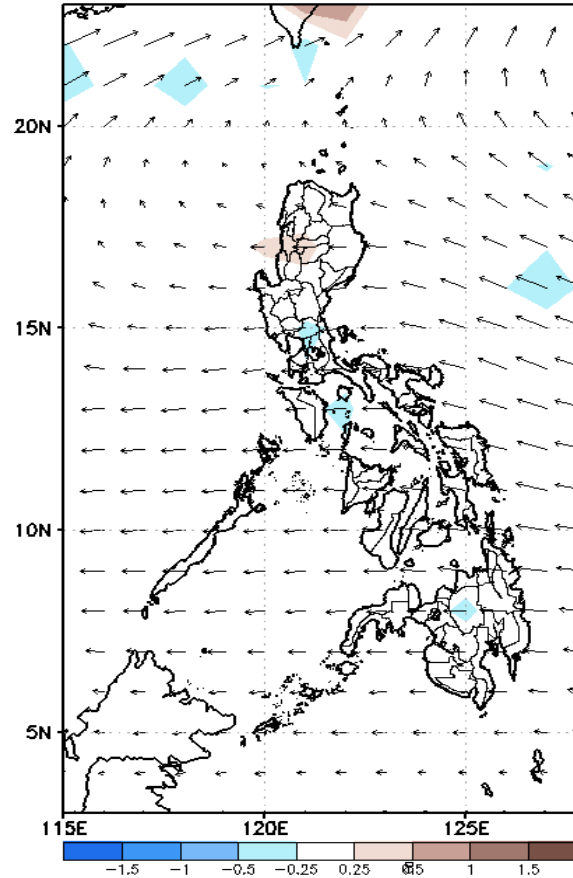
GEFS Week-1 Forecasts: Divergence & Wind Anomaly

Week 1: Apr 18-24, 2022

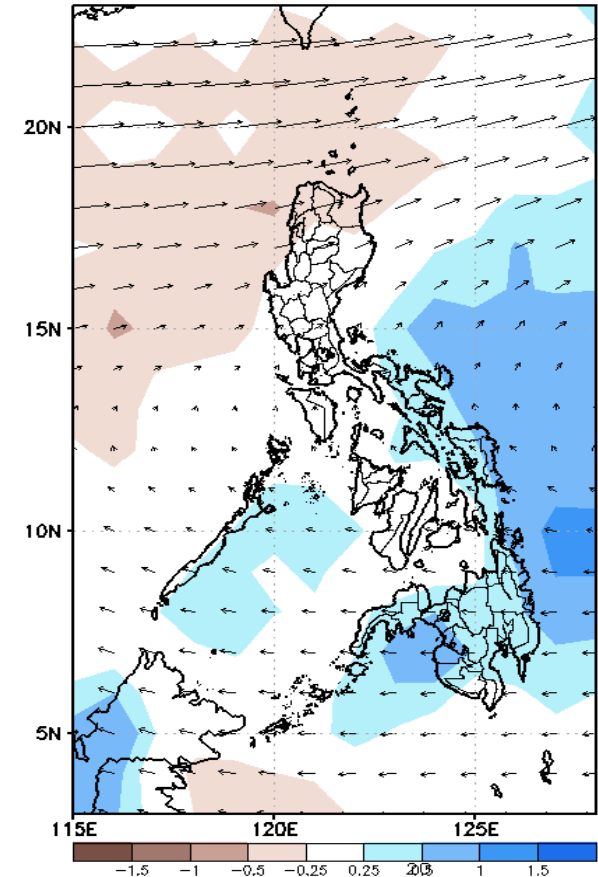
GEFS Week-1 850-hPa Divergence and Wind Anom
Valid: 20220418 - 20220424



GEFS Week-1 700-hPa Divergence and Wind Anom
Valid: 20220418 - 20220424



GEFS Week-1 200-hPa Divergence and Wind Anom
Valid: 20220418 - 20220424



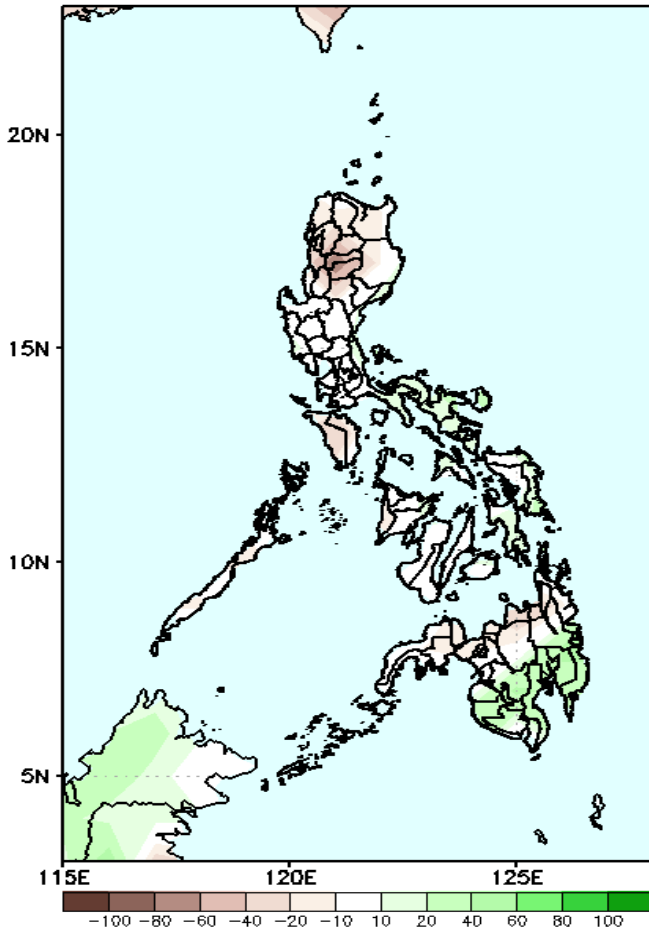
Upper and low level Divergence suggest a likelihood of light precipitation in Bicol region, Palawan, Western Visayas and most parts of Mindanao. Easterlies affecting most parts of the country attributing to warmer temperatures during the forecast period.



Precipitation Anomaly and Exceedance Probability > 25/50 mm

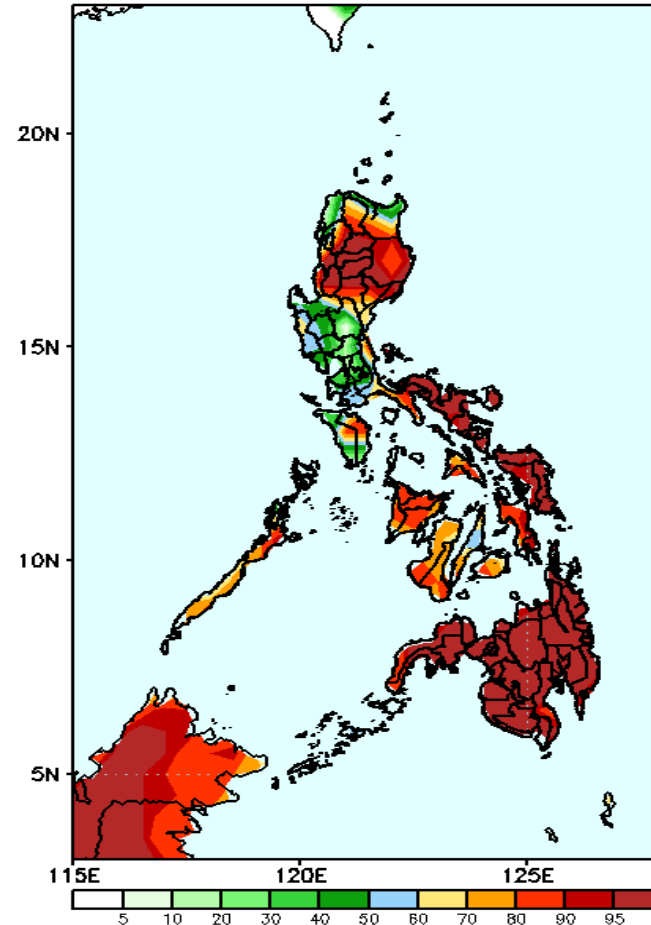
Week 1: Apr 18-24, 2022

GEFS Week-1 Precip Anomaly
Valid: 20220418 - 20220424



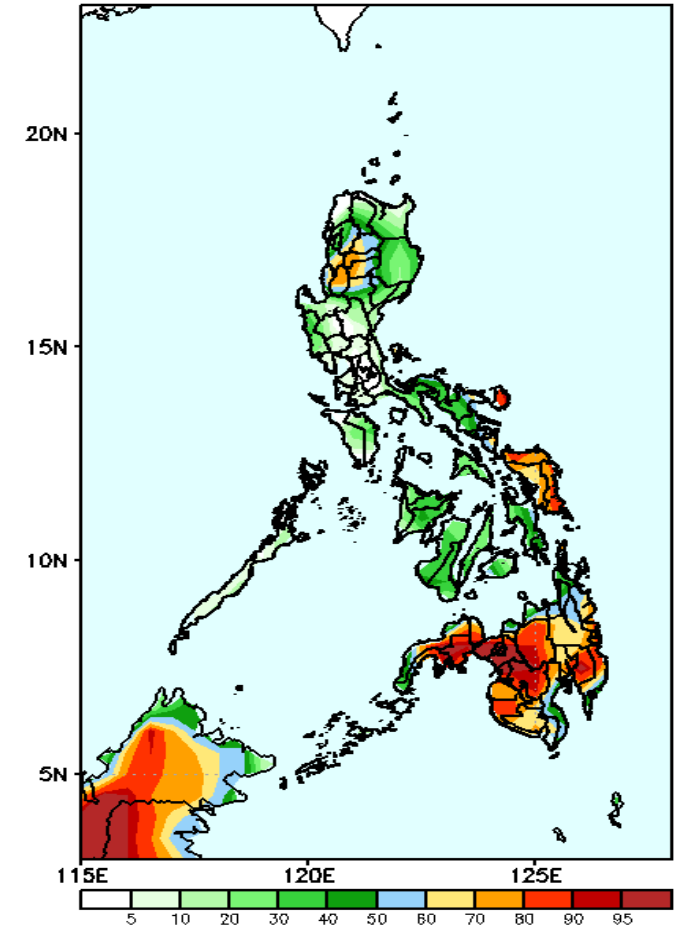
Rainfall deficit of 40-60mm in Cordillera Region, Mindoro and Northern Mindanao while 40-60mm increase of rainfall in southern Mindanao during the forecast period.

GEFS Week-1 Exceedance Prob. > 25mm
Valid: 20220418 - 20220424



High probability of rainfall to exceed 25mm in most parts of the country except in some areas in Central during the forecast period.

GEFS Week-1 Exceedance Prob. > 50mm
Valid: 20220418 - 20220424

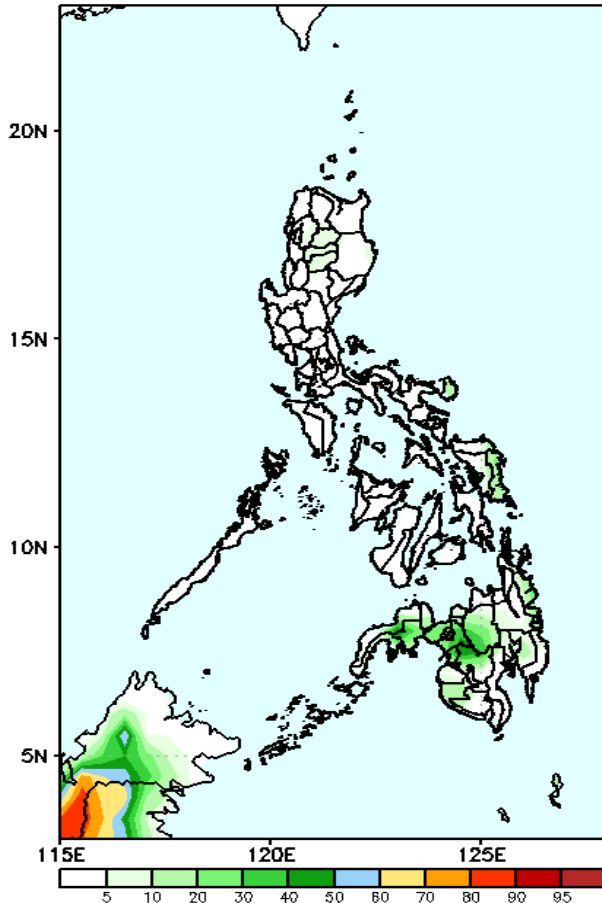


High probability of rainfall to exceed 50mm in most areas in Cordillera Region, Catanduanes, Eastern Visayas and most parts of Mindanao while less likely for the rest forecast period.

Exceedance Probability > 100/150/200 mm

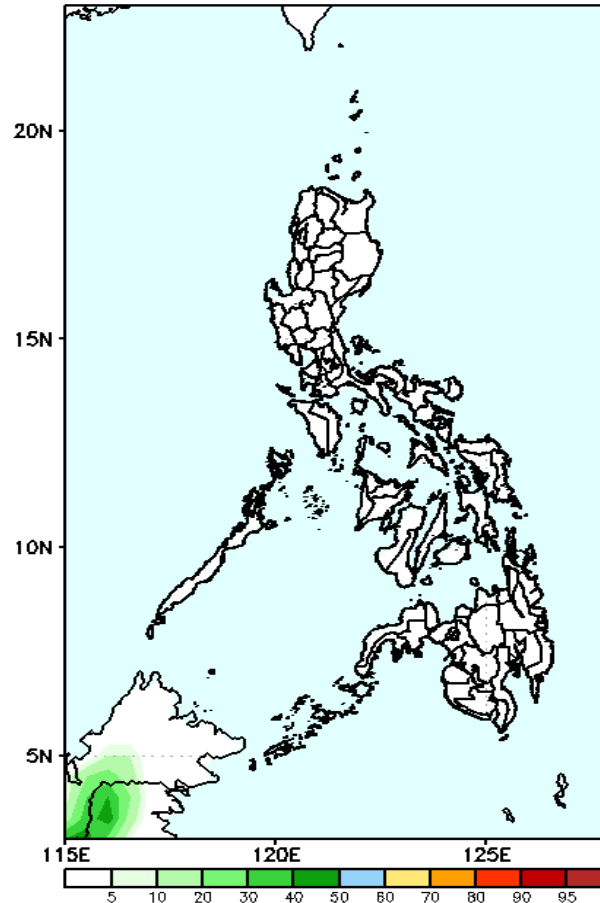
Week 1: Apr 18-24, 2022

GEFS Week-1 Exceedance Prob. > 100mm
Valid: 20220418 - 20220424



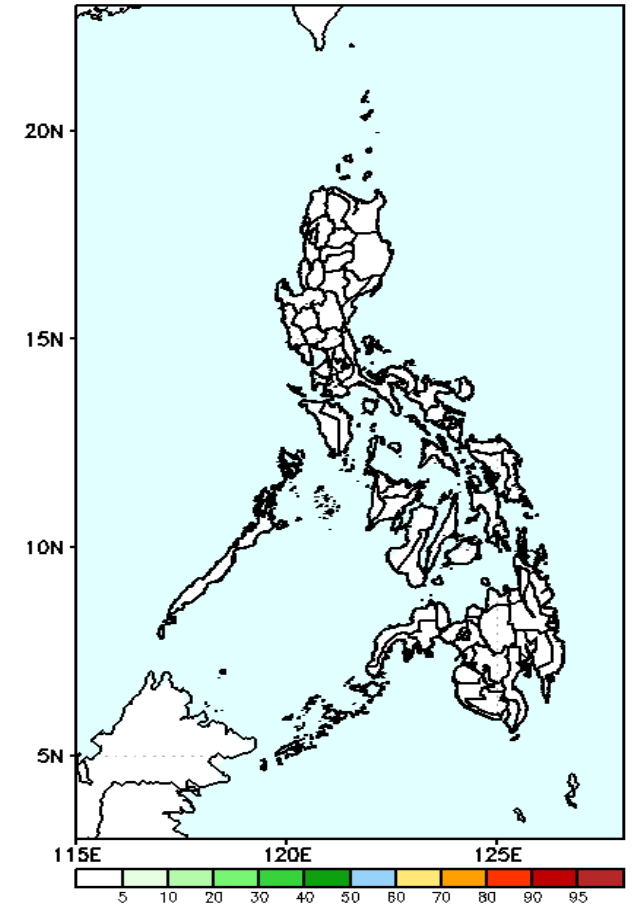
Low probability of rainfall to exceed 100mm in most parts of the country during the forecast period.

GEFS Week-1 Exceedance Prob. > 150mm
Valid: 20220418 - 20220424



Low probability of rainfall to exceed 150mm in most parts of the country during the forecast period.

GEFS Week-1 Exceedance Prob. > 200mm
Valid: 20220418 - 20220424



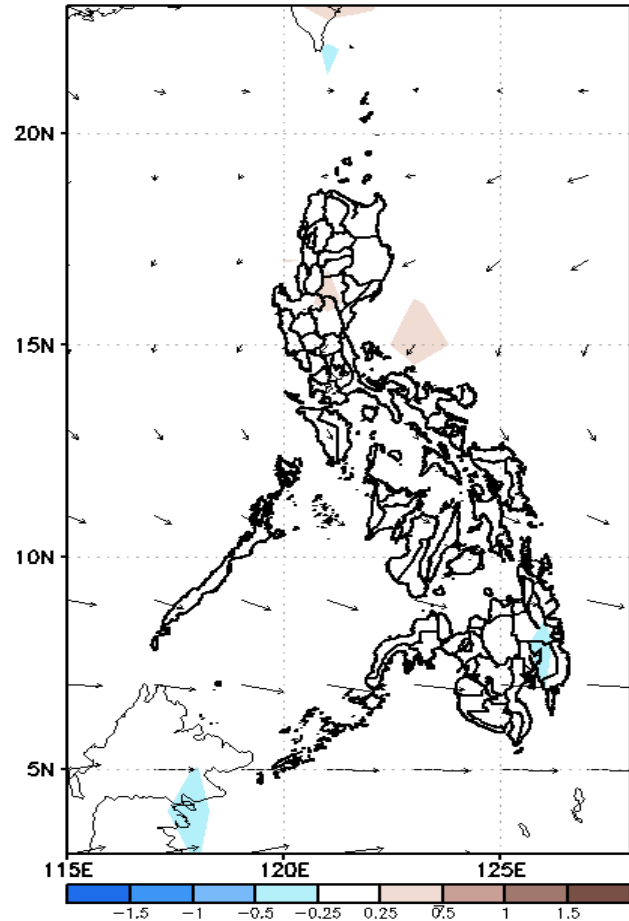
Low probability of rainfall to exceed 200mm in most parts of the country during the forecast period.



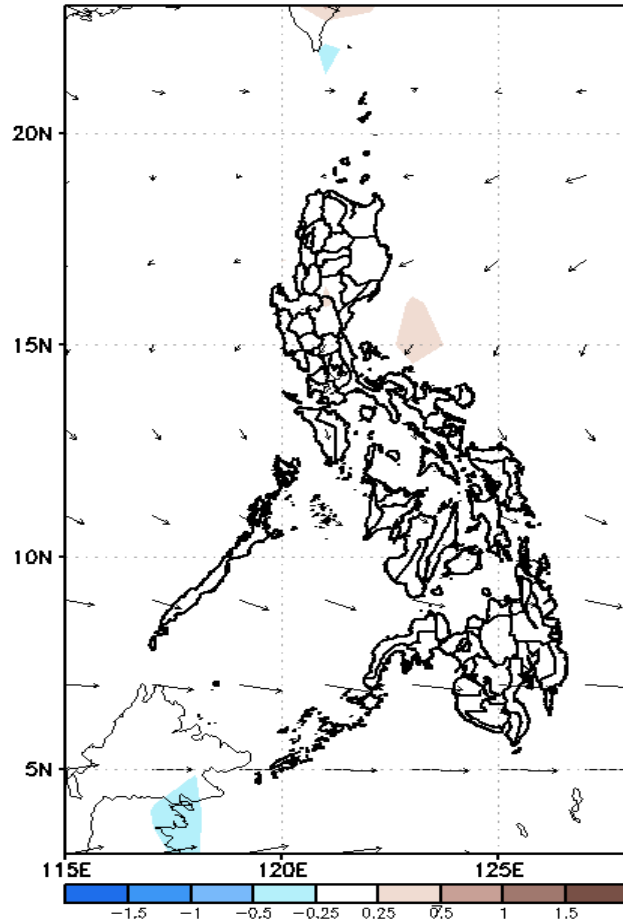
GEFS Week-2 Forecasts: Divergence & Wind Anomaly

Week 2: Apr 25- May 01, 2022

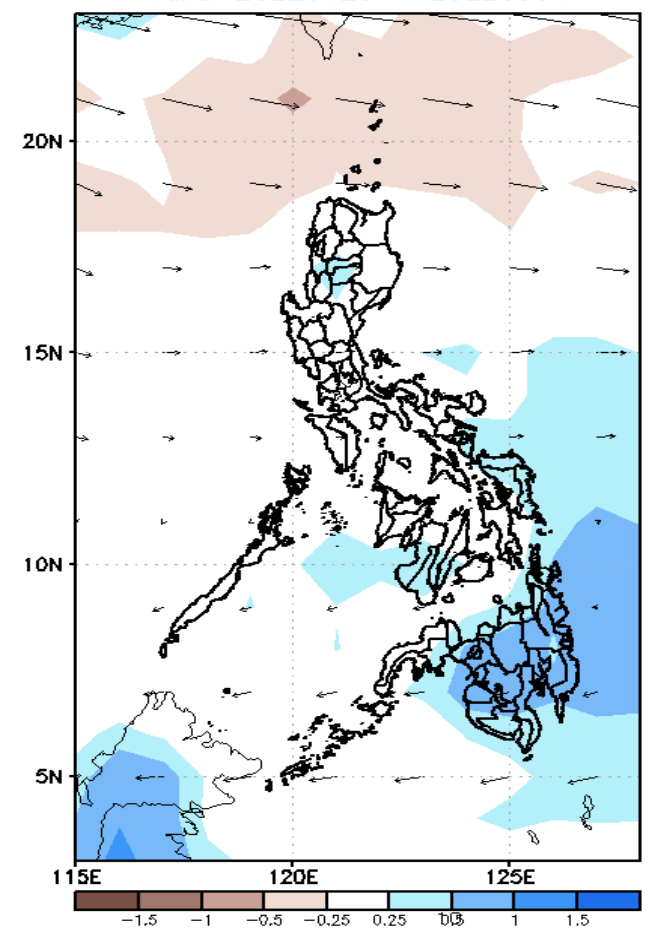
GEFS Week-2 850-hPa Divergence and Wind Anom
Valid: 20220425 - 20220501



GEFS Week-2 700-hPa Divergence and Wind Anom
Valid: 20220425 - 20220501



GEFS week-2 200-hPa Divergence and Wind Anom
Valid: 20220425 - 20220501

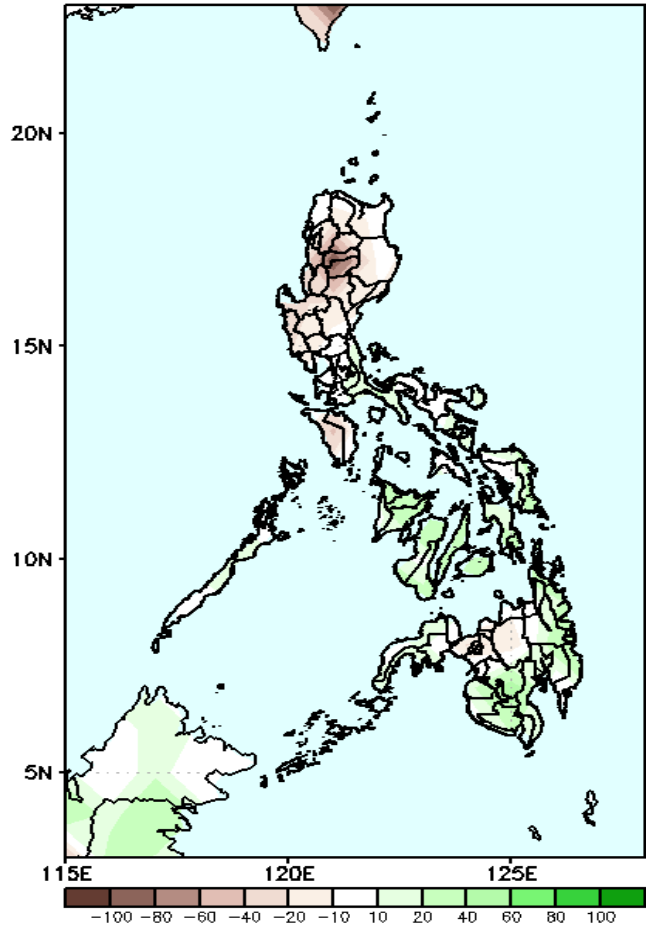


Upper and low level Divergence suggest a likelihood of light precipitation in some parts of Visayas and most parts of Mindanao. Easterlies affecting most parts of the country attributing to warmer temperatures during the forecast period.

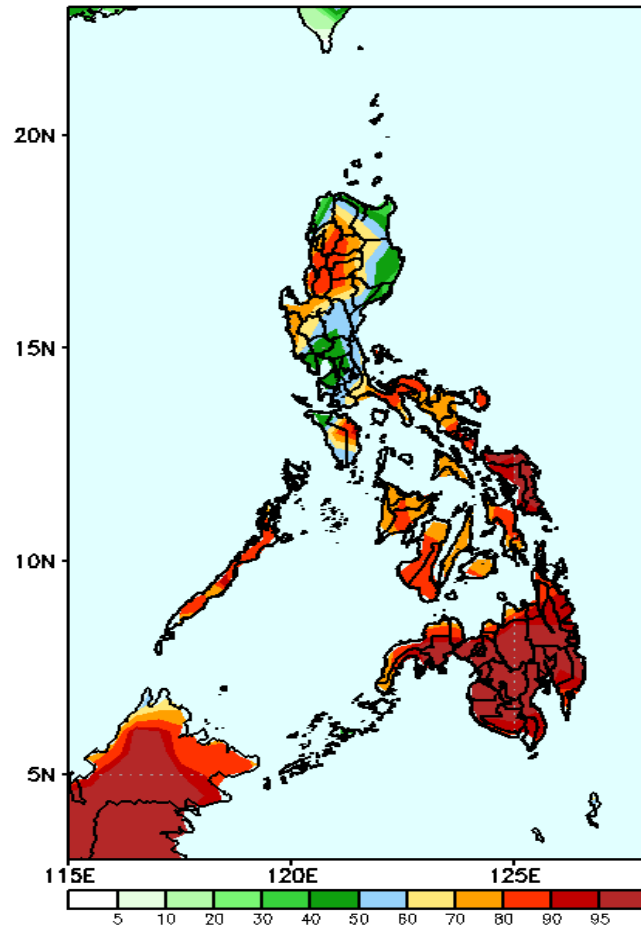
Precipitation Anomaly and Exceedance Probability > 25/50 mm

Week 2: Apr 25- May 01, 2022

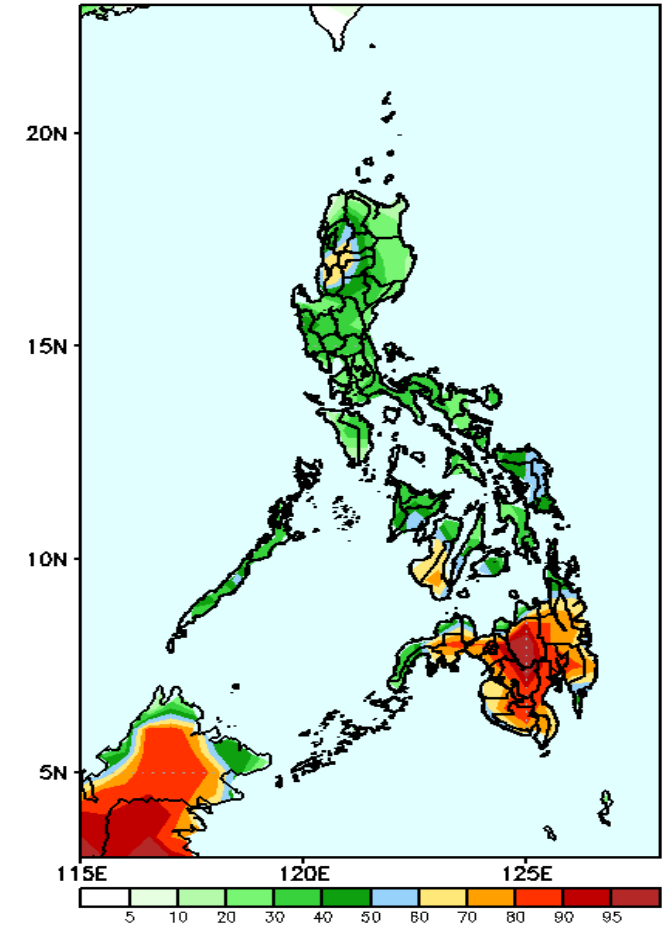
GEFS Week-2 Precip Anomaly
Valid: 20220425 - 20220501



GEFS Week-2 Exceedance Prob. > 25mm
Valid: 20220425 - 20220501



GEFS Week-2 Exceedance Prob. > 50mm
Valid: 20220425 - 20220501



Rainfall deficit of 40-90mm in most parts of the country during the forecast period.

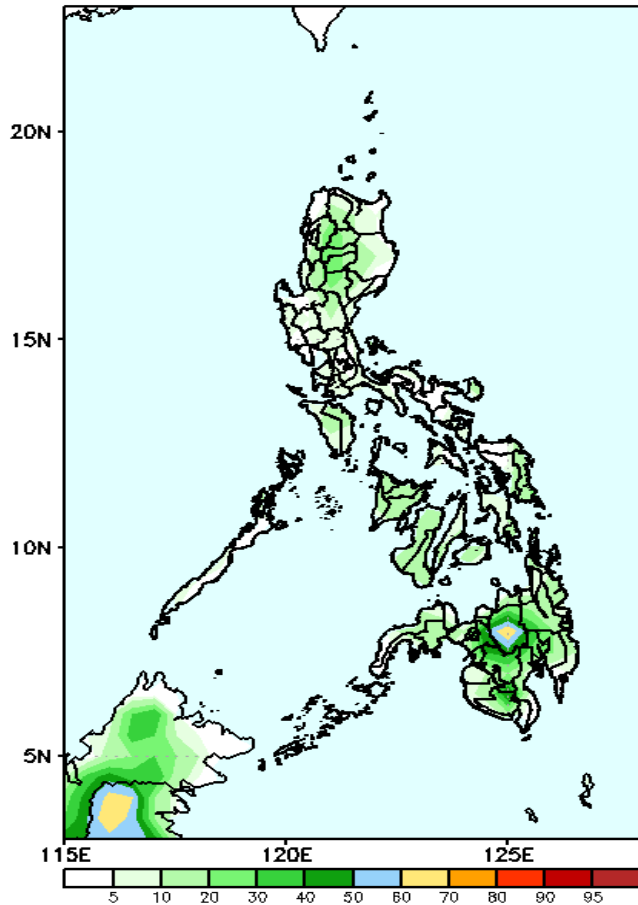
High probability of rainfall to exceed 25mm in most parts of the country except in some areas in Northern and Eastern Luzon during the forecast period.

High probability of rainfall to exceed 50mm in most parts Mindanao while less likely in most parts of Luzon and Visayas during the forecast period

Exceedance Probability > 100/150/200 mm

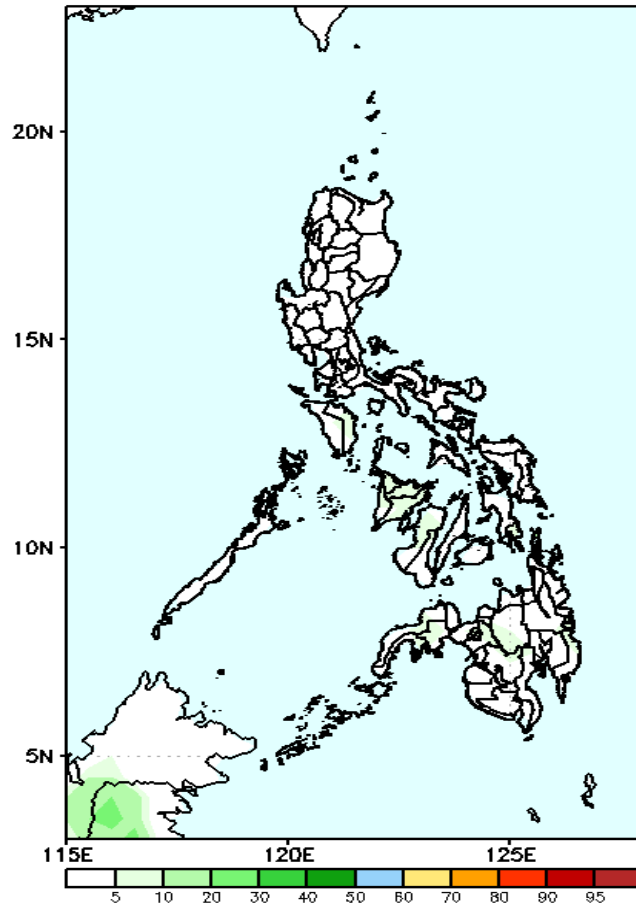
Week 2: Apr 25- May 01, 2022

GEFS Week-2 Exceedance Prob. > 100mm
Valid: 20220425 - 20220501



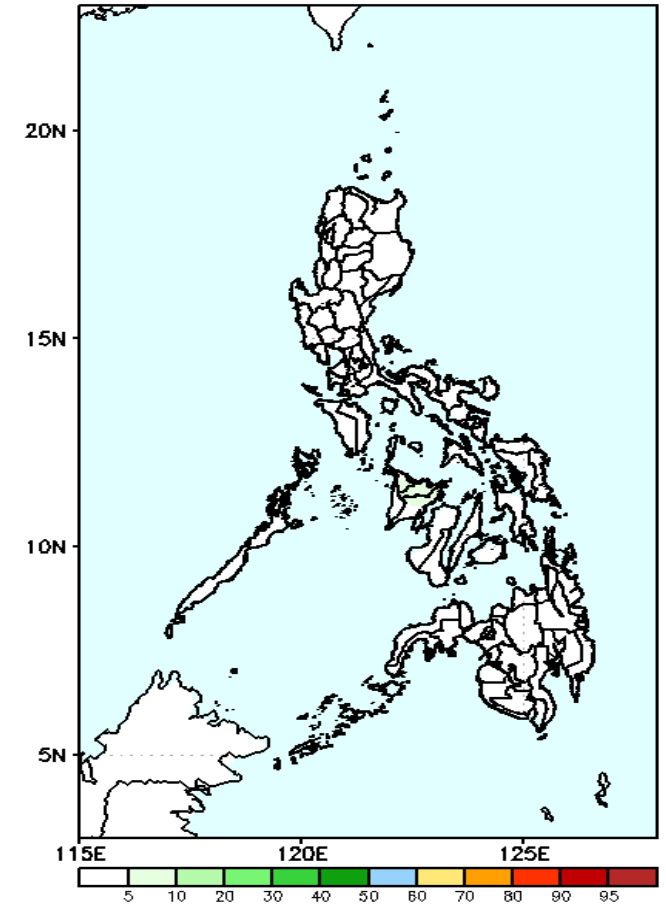
Low probability of rainfall to exceed 100mm in most parts of the country during the forecast period.

GEFS Week-2 Exceedance Prob. > 150mm
Valid: 20220425 - 20220501



Low probability of rainfall to exceed 150mm in most parts of the country during the forecast period.

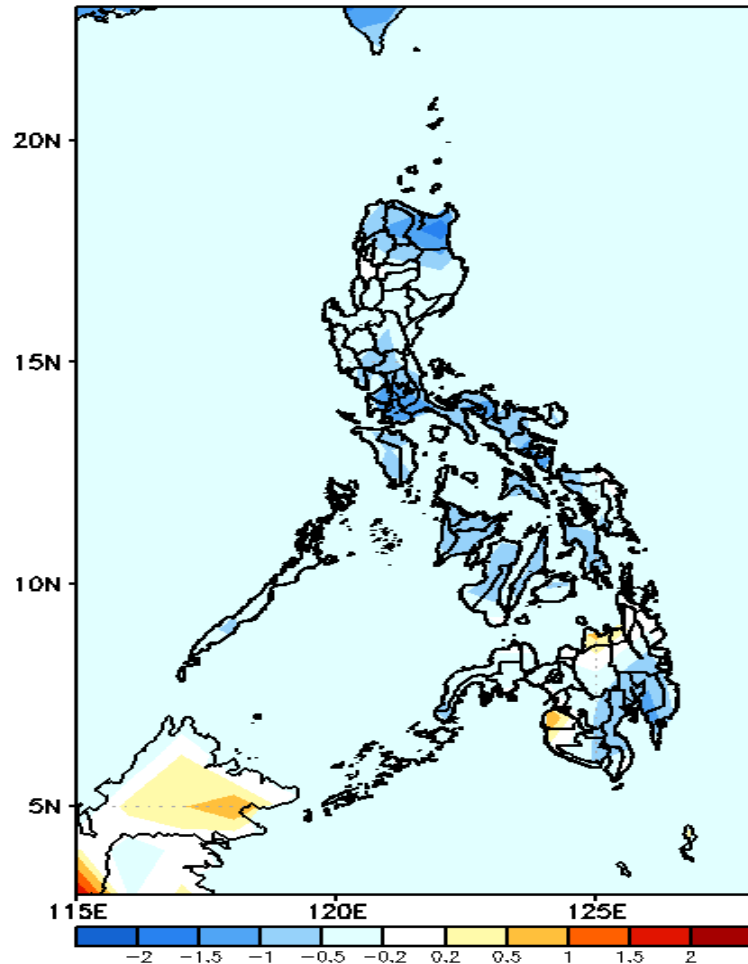
GEFS Week-2 Exceedance Prob. > 200mm
Valid: 20220425 - 20220501



Low probability of rainfall to exceed 200mm in most parts of the country during the forecast period.

GEFS Week-1 & 2 Forecasts: T2m Anomaly

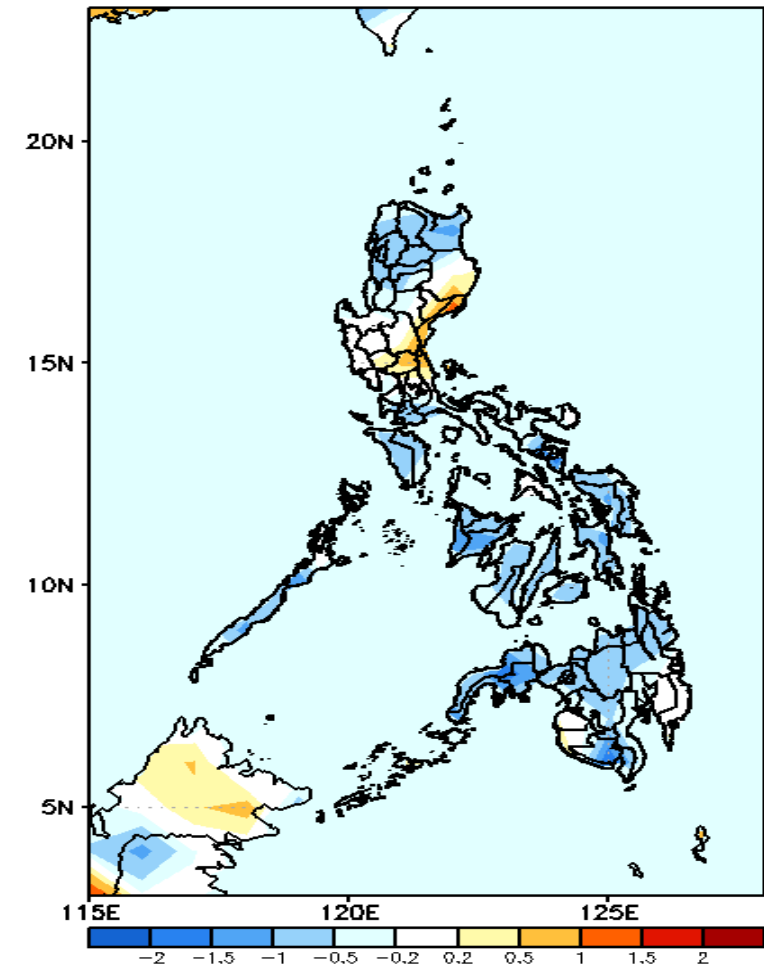
GEFS Week-1 T2m Anomaly
Valid: 20220418 - 20220424



2m Temperature Week 1: Apr 18-24, 2022

Slightly cooler to cooler than average surface air temperature will likely experience in most parts of the country except in Northern Mindanao where average to slightly warmer temperature is expected during the forecast period.

GEFS Week-2 T2m Anomaly
Valid: 20220425 - 20220501



2m Temperature Week 2: Apr 25- May 01, 2022

Slightly cooler to cooler than average surface air temperature will likely experience in most parts of the country except in most parts of Cagayan Valley, Central Luzon and Davao Region where average to slightly warmer temperature is expected during the forecast period.